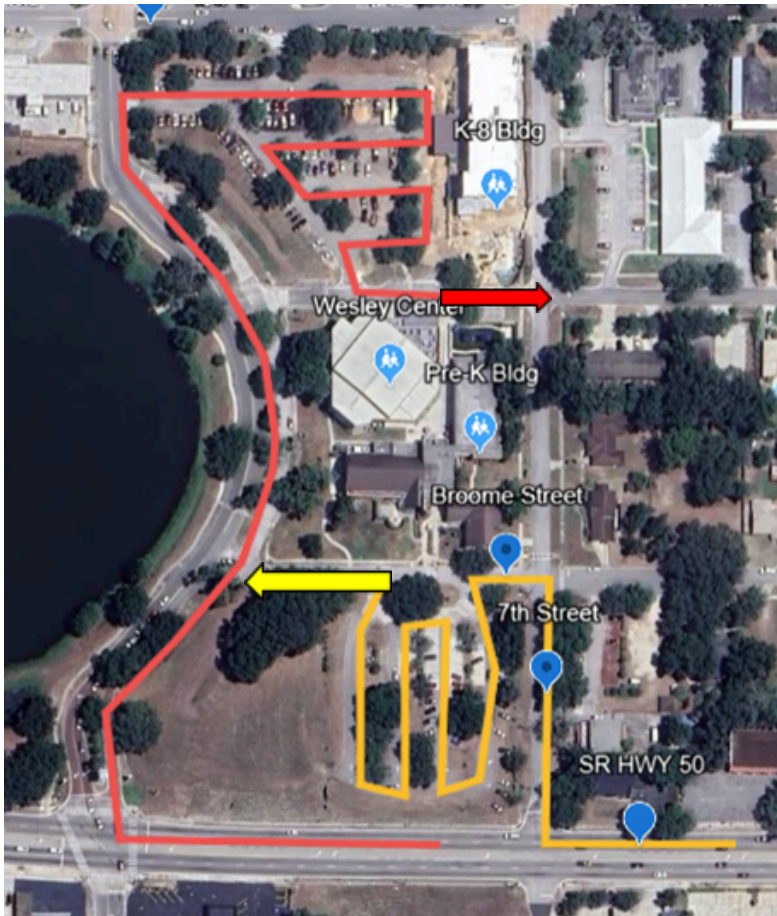


PICK-UP & DROP-OFF MAP 2024-2025



Drop Off PK3 & VPK

Park in South Lot and walk students to doors.

PK3: Main doors (by TV/ramp)
VPK: Side doors (by grass hill)

Pick-up VPK Classes

5 Day & 3 Day (MWF)

Pick-up time:

1:45-2:00pm

Pick-up location:

Red car line/North Lot

Students not picked up by 2:00pm will be sent to After Care and associated fees will be charged to the family's account.

Pick-up 3's Classes

Pick up time:

1:45-2:00pm

Pick up location:

Yellow car line/South Lot

After Care Pick up:

Walk into preschool building