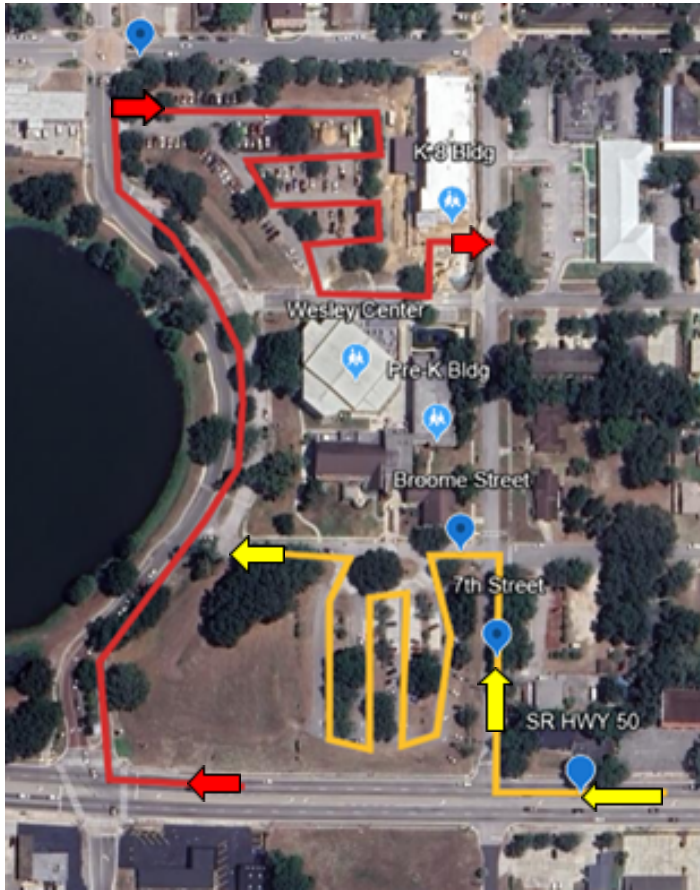


PICK-UP & DROP-OFF MAP 2024-2025



NOTES:

If you enter the DROP-OFF line before 8:10 and do not have a 4th-8th grader, please park in a parking spot until 8:10am to avoid clogging the line for the first group.

When you enter the carline for PICKUP in the North Lot (Wesley), please form two lines at the cones. We will alternate lines based between each set of cars.

Students who miss drop-off line must be signed in at the K-8 Front office. If they are signed in after 8:30am they will be marked tardy.

Students not picked up by 3:30pm (M/T/TH/F) & 2:45pm (Wed) will be sent to After Care and associated fees will be charged to the family's account.

Morning Drop-Off

All Grades follow **Red** Line North Lot (Wesley):

8:00-8:15

Grades 4th - 8th & Siblings

8:10 - 8:30

Grades Kindergarten - 3rd

Siblings in different age groups: Please drop younger siblings off with their older (4th grade +) siblings in the 8:00-8:15 window.

Afternoon Pick-up

Kindergarten without OLDER siblings:

Follow **YELLOW** line through South Lot (Social)
(3:00-3:15 M,T,Th,F & 2:15-2:30 W)

1st Grade - 5th Grade:

Follow **RED** line through the North Lot (Wesley)
(3:00-3:30 M,T,Th,F & 2:15-2:45 W)

Middle School (6th -8th)

Follow **YELLOW** line through the South Lot (Social)
(3:15-3:30 M,T,Th,F & 2:30-2:45W)

Siblings/wraparound kids will be loaded with their oldest sibling

After Care Pick up: Walk into preschool building